

IP PABX



KNTD-800

UC features for up to 800 users

The KNTD-800 IP PBX appliance is designed to bring leading edge voice, video, data, and ability features to enterprises, small and medium businesses, retail and residential environments in an easy-to-manage fashion. This enterprise-grade on premise IP PBX supports E1, SIP Trunk, RJ45 networks and offers scalability by supporting up to 800 users. Host Standby N+1 redundancy System design.

KNTD-800 server is a computer device that centrally processes and manages information, with multiple functions such as storing, processing, sharing, and protecting data.

The KNTD-800 server can be equipped with three major systems: telephone, broadcasting, and access control, and has efficient and stable performance to meet your various needs.

Advanced Call Handling	Remote Call Forwarding (Always, Busy, No Answer) activated via feature codes or Web GUI. Supports multiple destination sequential ringing.
Executive/Secretary	Supports Multiple Executive and Secretary groups configuration. Features include Intercom, Call Screening, and Status Monitoring (BLF).
Extension Management	Supports flexible extension swapping and relocation via software configuration without physical recabling.



800 users
Supports up to 800 users,
160 SIP trunkacCounts,
up to 160 concurrent calls.



Three-In-One
Optional,
Telephone system,
Broadcasting system,
Access control system.



Strongest-possible
security protection using
HTTP.



9th Generation
Intel® Core™ i7 Processors



Supports IVR
(Interactive Voice Response).



Built-in call recording server
recording accessed
via webuser interface.

SIP

Supports call queue
for efficient call
volume management.



Linux System



Technical Parameter



Model	KNTD-800 IP PBX Enterprise - class unified communication system
■ Hardware interface	
Host Standby N+1 redundancy System design	
Network Interface	RJ45 Gigabit interface (10/100 / 1000M Ethernet adaptive)
Reset switch	Support, Web configuration
■ Main Board/CPU Specifications	
Processor	Supports Intel 9 generation Core i9 processors
Chipset	Intel H310/Q370
GraphicControl	Intel coffeelake S processor integrated Intel UHD Graphics 630
Memory	1*DDR4 UDIMM, supports DDR4 2666, maximum capacity 32G
Storage	2*SATA3.0 Hard disk type: Both mechanical hard drives and solid-state drives are compatible
Display Port	1*VGA,up to 1920x1200 @60Hz1*DP,up to 4096x 2304 @60Hz
LAN	6*LAN,Intel1211,10/100/1000Mbps RJ45
USB	4*USB3.0,6*USB2.0
Audio	1*Headphone,1*Mic-In,1*Line-In,1*Line-out,1*5W AMP
COM	5*RS232,1*RS232/RS422/RS485
IO	1*pCle 16x slots,1*MiniPcle(Support mSATA,PS/2 mouse and keyboard,8*GPIO,1* CPUFAN,1*SYSFAN)
Watchdog	Support
BIOS	AMI EFI BIOS
System	Linux
CPU Total Cores	8
CPU Total Threads	8
Max Turbo Frequency	4.70 GHz
Intel® Turbo Boost Technology 2.0 Frequency	4.70 GHz
Processor Base Frequency	3.00 GHz
Cache	12 MB Intel® Smart Cache
Bus Speed	8 GT/s
TDP	65 W



Technical Parameter



■ Audio / video capability

Speech algorithm	G.711, 7.29, 7.23,7.26 encoding
Voice	G.711 A-law/ U-law, G.723.1, G.726, G.729A
Video coding	H.264.

■ Signaling protocol

DTMF detection method	Support RFC2833, SIP INFO
Digital signal	SIP2.0
Terminal management and automatic deployment capabilities	Support for SIP terminal plug -and-play auto-deployment (including DHCP / multicast SIP , support Remote upgrade,local upgrade)
Network protocol	TCP UDP IP, RTP DHCP,SSH,HTTP,SIP

■ Safety

Advanced defense	Alert events, whitelists, blacklists
------------------	--------------------------------------

■ Physical characteristics

Global universal power supply	Input: 100~ ~ 240VAC, 50 / 60Hz;
weight	Equipment weight: 3.5 Kg; Package weight: 4.4Kg
Use the environment	Operating environment:32 -113° F/0~ 45° C, humidity 10 - 90% (No condensation) Storage environment: 14-140°F / - 10 ~ 60° C, humidity 10 - 90% (No condensation)
Size	428*259. 4*44. 6mm
Installation	Desktop or cabinet installation

Additional features

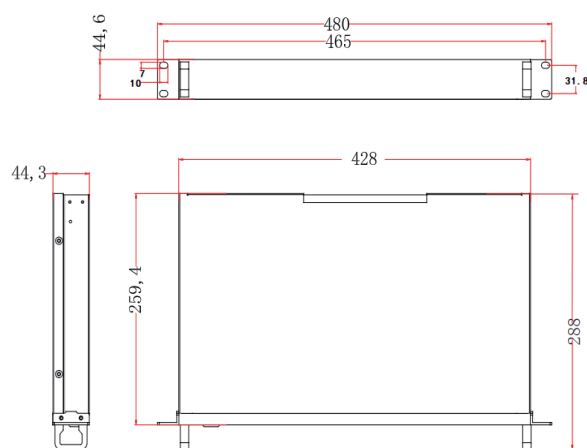
Multi language support	Web user interface supports English / Simplified Chinese, customizable IVR / voice prompts in English, Chinese
Caller ID	ETSI-DTMF
Call Center	Supports call queues.
Customize Auto	Supports VR (Interactive Voice Response)
Concurrent call	Up to 800 SIP terminals can be registered, up to 160 concurrent calls
members	Calls waiting, Call transfer, Ringing group,Subgroup,meeting,broadcast, blacklist, call / intercom, etc
Certification	EN 54-16、ISO 7240-16:2007、IEC 61082、IEC 60300、IEC 60068、IEC 60050、IEC 62368、 IEC60601-1、IEC 60601-1-2、ISO14001、ISO45001、ISO9001

KNTECHIP PABX MODEL NUMBER

REGISTER USER	SIMULTANEOUS CALLS	MODEL NUMBER
50 line	10 line	KNTD-50
100 line	20 line	KNTD-100
300 line	60 line	KNTD-300
500 line	100 line	KNTD-500
800 line	160 line	KNTD-800
1000 line	200 line	KNTD-01K
3000 line	600 line	KNTD-03K
5000 line	1000 line	KNTD-05K

Size display :

Unit: mm



Hot Standby Redundancy



ON/OFF Power

Dual Power



ON/OFF Power

6x LAN 4x USB3.0 VGA DP Audio



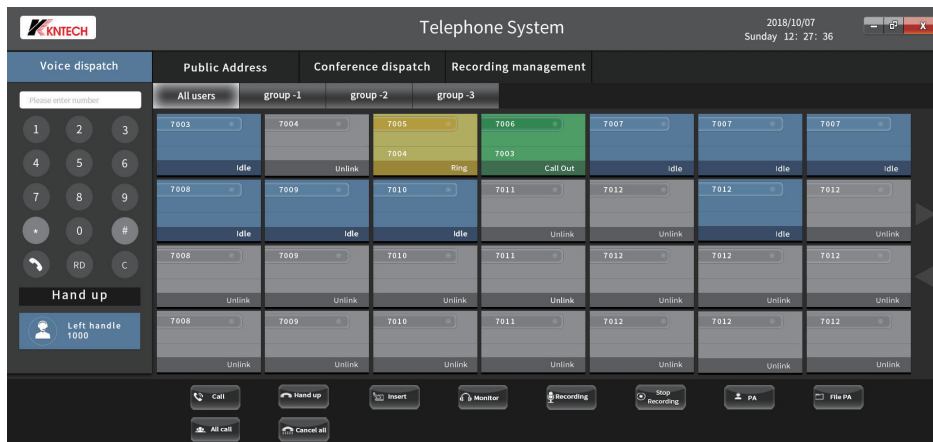
ON/OFF Power

6x LAN 4x USB3.0 VGA DP Audio



Voice dispatch-Telephone call

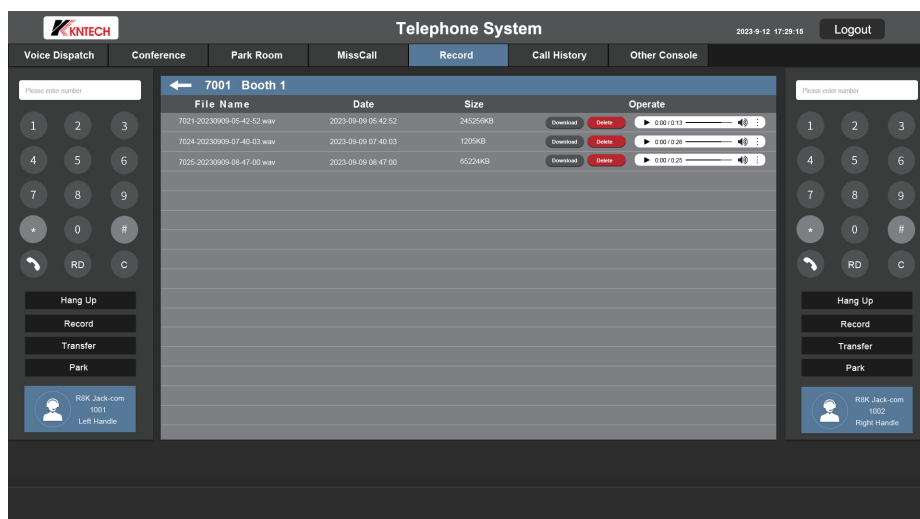
Blue color means on line , green color means ringing, yellow color means busy.



Conference dispatch-Meeting room



Configuration Manual



Emergency telephone system

